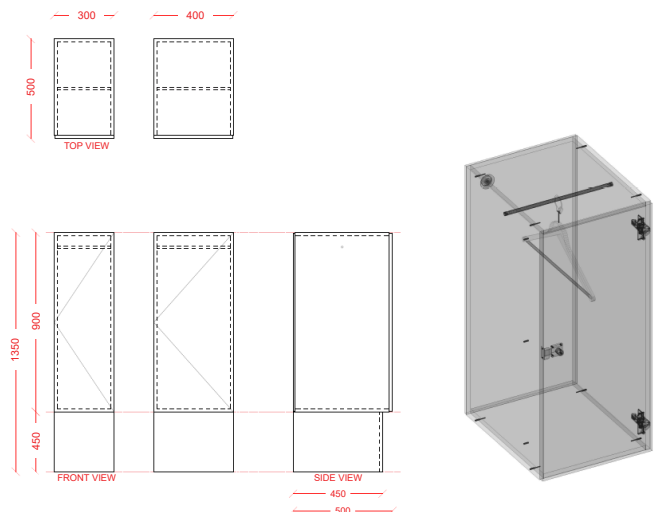




## INTERLOC LOCKER TYPE INTERLOC DDA

### INTERLOC ACCESSIBLE LOCKER. SINGLE DOOR LOCKER UNIT. CONVENTIONAL STYLE WITH HANGING SPACE.

- ▶ Interloc Locker Type Accessible - Locker- Hanging
- ▶ Locker .900mm high x .500mm deep
- ▶ Plinth .450mm high (Black Standard)  
Optional colours available at additional cost.
- ▶ Top Capping 16mm
- ▶ Finished height 1.366m
- ▶ .400mm and .300mm wide Standard
- ▶ Custom dimensions available upon request
- ▶ Coat hanger provided
- ▶ Matching Colour plinth available upon request
- ▶ Nominate Interloc Locking - request Interloc options
- ▶ End Panels / Filler Panels to suit
- ▶ Interloc Numbering coloured labels or option for printed labels at extra cost
- ▶ Vents optional (vertical or horizontal)
- ▶ Coloured Internals optional



**REVIT Portal**  
portal.interloc.com.au

**Locker Builder**  
(separate to Revit)