











interLoc[®]
LOCKERS AND PARTITIONS

PARTITIONING SYSTEM SPECIFICATION SHEET (INCLUSIVE OF PRIVACY BEVEL)

PEDESTAL MOUNTED OVERHEAD BRACED

**A ROBUST LOW MAINTENANCE
PARTITIONING SYSTEM FOR:**

-  SPORTING AMENITIES
-  SCHOOLS & UNIVERSITIES
-  HOTELS & CLUBS
-  SHOPPING CENTRES
-  GYM CHANGE ROOMS
-  CORPORATE OFFICES
-  END OF TRIP FACILITIES
-  RECREATIONAL FACILITIES



DESIGN FEATURES

- ▶ 3 METLAM MODA CONCEALED SPRING HINGES
- ▶ MODA CONCEALED COAT HOOK
- ▶ SHOWERS COME WITH 2 EXTRA COAT HOOKS
- ▶ PRIVACY BEVEL STANDARD
- ▶ MODA LOCK
- ▶ INDICATOR SET
- ▶ CONCEALED MODA BUMPER

WARRANTY

- ▶ COMPACT LAMINATE 10 YEARS
- ▶ HARDWARE 12 MONTHS
- ▶ LIFETIME INSTALLATION
(IF INSTALLED BY AN INTERLOC REGISTERED INSTALLER)

BENEFITS

- ▶ EASY TO CLEAN
- ▶ MTO
- ▶ CUSTOM SIZES
- ▶ MOST ECONOMICAL PARTITIONING SYSTEM
- ▶ AVAILABLE AS TOILET OR SHOWER PARTITIONS

HARDWARE

- ▶ 190MM ADJUSTABLE ALUMINIUM LEGS WITH BLACK NYLON BASE
- ▶ STAINLESS STEEL FIXINGS
- ▶ NATURALLY ANODISED ALUMINIUM EXTRUSION
- ▶ POWDER COATING AVAILABLE UPON REQUEST



Heavy Duty Aluminum Pedestal Leg



Concealed Moda Spring Hinges



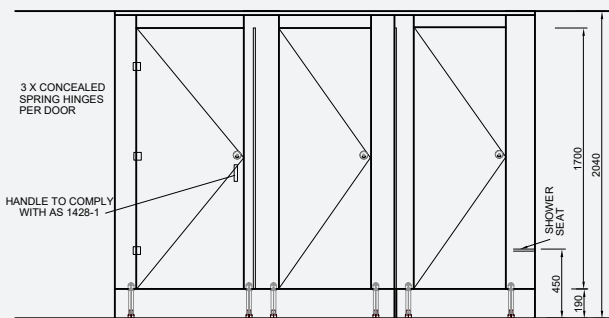
Concealed Moda Bumper



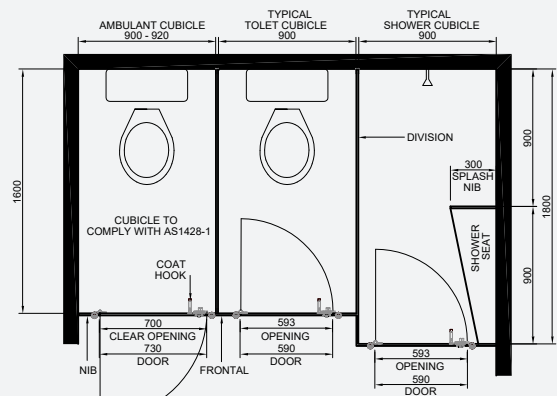
Moda Lock and Indicator



Concealed Moda Hat and Coat Hook



Elevation



Plan View

interloc
LOCKERS AND PARTITIONS

Interloc Lockers Pty Ltd
ABN 53 103 876 455

Phone (Tollfree): 1300 468 375
Email: sales@interloc.com.au

www.interloc.com.au

